

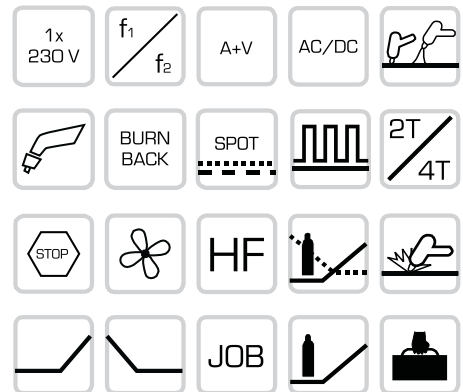
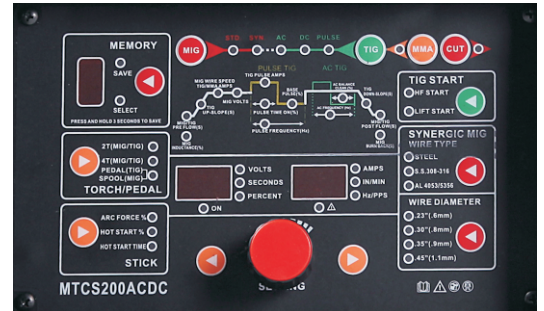


# DIGITAL PULSE MIG/ MMA/ACDC TIG/CUT MULTI-WELDING MACHINE



**SPARKLINE  
WELDERS**

ISO 9001 : 2015 Company



## Optional

## Accessories



- Mig torch 3m
- Tig torch WP-26-4m
- Earth clamp cable 300A earth clamp

- Welding cable with 300A electrode holder
- Gas hose 2m

Model	Power Supply Voltage	Rate Input Capacity (KVA)	Rate Input Current (A)	No Load Voltage	Output Current Range	Duty Cycle	Weight L*W*H*(mm)
MTCS200ACDC	1*230V, 50/60Hz	7.5	38	65/260V	MIG30-200A, TIG:10-200A, MMA:10-175A UT:20-50A	35%	30 kg 600*290*480
MTCS250ACDC	1*230V, 50/60Hz	8.8	45	65/260V	MIG30-250A, TIG:10-250A, MMA:10-200A UT:20-60A	35%	38 kg 600*290*480

In view of continuous Development, we reserve the rights to modify the design, specifications and or dimensions without notice.